

Product Information

Name	beta Amyloid (1-42) antigen
Catalog #	2029
Species	Human
Product Description	Recombinant protein produced by <i>in vitro</i> mammalian cell culture free from animal-derived components
NCBI Ref. Seq. No.	2WK3
Expression Fragment	Full length
AA. Residues No.	1-42aa.
Predicted MW	4.5kDa
Actual MW	ND
Modification	None
Tag	None
Solution	Saline solution, pH 6.5-7.5
Appearance	Clear, transparent liquid, colorless or slightly yellow
Storage	2-8°C for 3 days, -20°C for long-term storage, avoid multiple freeze-thaw cycles
Purity	>95% (estimative)
Concentration	Marked on the vial
Lot #	_____
References	

User Guide

Catalog # 2029

Lot # _____

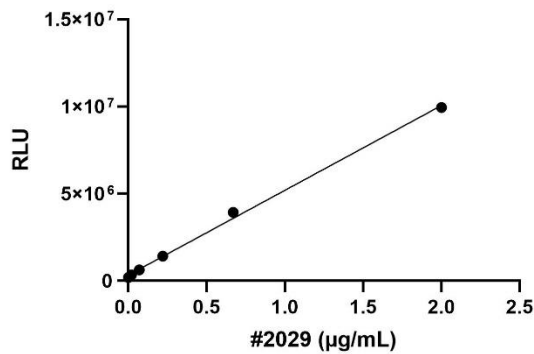
CLIA

Antigen Identification

The antigen adopted in the following assays is beta Amyloid (1-42) antigen (#2029).

Procedure

1. Mix 20 μ L serially diluted antigen or serum samples with 20 μ L (diluted to working conc. 50T/mL) capture reagent of 1029101(B) and 20 μ L 0.6mg/mL streptavidin-conjugated magnetic beads. Incubate with stir at 37 $^{\circ}$ C for 30 minutes.
2. Add 50 μ L (diluted to working conc. 20T/mL) detection reagent of 1029201(AP). Incubate with stir at 37 $^{\circ}$ C for 30 minutes.
3. Measure the relative light unit (RLU) of each reaction with a clinical approved chemiluminescence analyzer.



HKIG™ All Rights Reserved