

Product Information

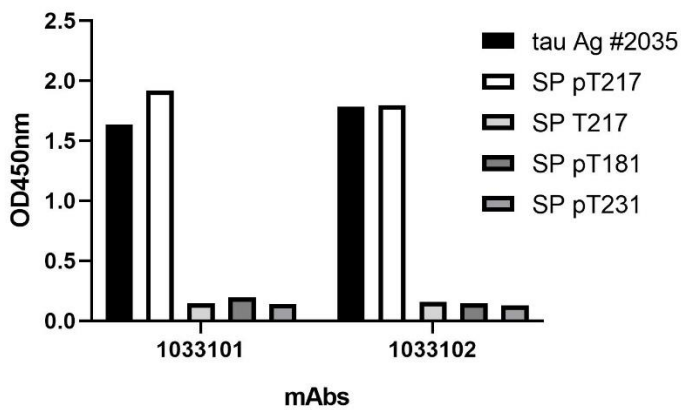
Name	Anti tau (pT217) monoclonal antibody
Target	tau with phosphorylation at 217 threonine
Target Species	Human
Target Description	Phosphorylation-modified aggregated tau is a novel diagnostic biomarker of Alzheimer's disease (AD).
Host	Mouse
Product Description	Monoclonal antibody produced by <i>in vitro</i> cell culture under conditions free from animal-derived components
Conjugation	Unconjugated/Biotin
Catalog #	1033101/1033101(B)
Solution	Saline solution, pH 6.5-7.5 with preservative
Appearance	Clear, transparent liquid, colorless or slightly yellow
Storage	2-8°C
Purity	>95%
Subclass	IgG1, kappa
Affinity (K_{aff})	>10 ⁹ L/mol
LoB	User Guide
Specificity	Positive: / Negative: tau (unphosphorylated), tau (pT181), tau (pT231)
Epitope	phosphorylation site at 217 threonine of tau
Applications	<input checked="" type="checkbox"/> ELISA <input checked="" type="checkbox"/> CLIA <input type="checkbox"/> GICA <input type="checkbox"/> FIA <input type="checkbox"/> IHC
Pair Recommendations	<input checked="" type="checkbox"/> Capture <input type="checkbox"/> Detection Pairable with #1035201
Stability	2 years
Concentration	2.0 mg/mL (+/-10%) or marked on the vial
Lot #	_____
References	

User Guide

Catalog # 1033
Lot # _____

Specificity

An indirect ELISA is adopted to determine the recognition of the monoclonal antibody #1033101 and #1033102 to the phosphorylated 217 threonine of tau. Coating antigens are as follow: 1. tau (phosphorylation) antigen (#2035), 2: Synthetic peptide covering the phosphorylated 217 threonine of tau, 3: Synthetic peptide covering the non-phosphorylated 217 threonine of tau, 4: Synthetic peptide covering the phosphorylated 181 threonine of tau, 5: Synthetic peptide covering the phosphorylated 231 threonine of tau.



HKIG™ All Rights Reserved