

## Product Information

<b>Name</b>	Anti beta Amyloid (1-40) monoclonal antibody
<b>Target</b>	beta Amyloid (1-40)
<b>Target Species</b>	Human
<b>Target Description</b>	Amyloid beta peptide (A $\beta$ ) accumulation in the brain is proposed to be an early toxic event in the pathogenesis of Alzheimer's disease.
<b>Host</b>	Mouse
<b>Product Description</b>	Monoclonal antibody produced by <i>in vitro</i> cell culture under conditions free from animal-derived components
<b>Conjugation</b>	Unconjugated/Biotin
<b>Catalog #</b>	1030101/1030101(B)
<b>Solution</b>	Saline solution, pH 6.5-7.5 with preservative
<b>Appearance</b>	Clear, transparent liquid, colorless or slightly yellow
<b>Storage</b>	2-8°C
<b>Purity</b>	>95%
<b>Subclass</b>	IgG1, kappa
<b>Affinity (K<sub>aff</sub>)</b>	>10 <sup>9</sup> L/mol
<b>LoB</b>	User Guide
<b>Specificity</b>	Positive: beta Amyloid (1-42) (on the condition of >1000pg/mL) Negative: tau (phosphorylation), HSA
<b>Epitope</b>	ND
<b>Applications</b>	<input checked="" type="checkbox"/> ELISA <input checked="" type="checkbox"/> CLIA <input type="checkbox"/> GICA <input type="checkbox"/> FIA <input type="checkbox"/> IHC
<b>Pair Recommendations</b>	<input checked="" type="checkbox"/> Capture <input type="checkbox"/> Detection Pairable with #1030201
<b>Stability</b>	2 years
<b>Concentration</b>	2.0 mg/mL (+/-10%) or marked on the vial
<b>Lot #</b>	_____
<b>References</b>	

## User Guide

Catalog # 1030  
Lot # \_\_\_\_\_

---

### CLIA

#### Antigen Identification

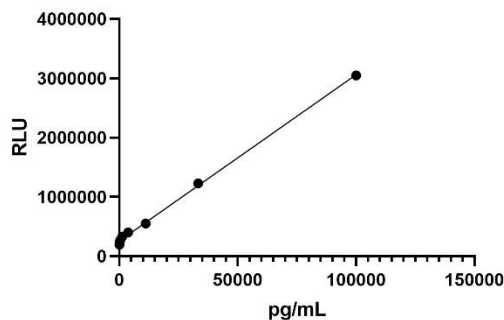
The antigen adopted in the following assays is a widely recognized clinical applied product obtained commercially.

#### Procedure

1. Mix 20 $\mu$ L serially diluted antigen or serum samples with 20 $\mu$ L (diluted to working conc. 50T/mL) capture reagent of 1030101(B) and 20 $\mu$ L 0.6mg/mL streptavidin-conjugated magnetic beads. Incubate with stir at 37 $^{\circ}$ C for 30 minutes.
2. Add 50 $\mu$ L (diluted to working conc. 20T/mL) detection reagent of 1030201(AP). Incubate with stir at 37 $^{\circ}$ C for 30 minutes.
3. Measure the relative light unit (RLU) of each reaction with a clinical approved chemiluminescence analyzer.

#### Measuring Range

The linear measuring range is 137.1-10000pg/mL ( $R^2>0.99$ ).



**Limit of Blank\*** \*Follow the Guideline EP17 published by Clinical and Laboratory Standards Institute (CLSI)

Sample tested: blank samples. Tests: 20.

The LoB is <100pg/mL.

**Limit of Detection\*** \*Follow the Guideline EP17 published by Clinical and Laboratory Standards Institute (CLSI)

Sample tested: low concentration samples. Tests: 20.

The LoD is <120pg/mL.

#### Specificity

The assay shows no cross-reactivities when detecting antigens as follows: beta Amyloid (1-42) at a tested conc. of 1000pg/mL, tau (phosphorylation) at a tested conc. of 1000pg/mL, human serum albumin at a tested conc. of 100mg/mL.

HKIG™ All Rights Reserved