

Product Information

Name	Anti TSH monoclonal antibody
Target	thyroid stimulating hormone, TSH
Target Species	Human
Target Description	TSH triggers thyroid to release its hormones. High TSH levels usually indicate hypothyroidism, and low TSH levels usually indicate hyperthyroidism.
Host	Mouse
Product Description	Monoclonal antibody produced by <i>in vitro</i> cell culture under conditions free from animal-derived components
Conjugation	Unconjugated/Biotin
Catalog #	1024101/1024101(B)
Solution	Saline solution, pH 6.5-7.5 with preservative
Appearance	Clear, transparent liquid, colorless or slightly yellow
Storage	2-8°C
Purity	>95%
Subclass	IgG1, kappa
Affinity (K_{aff})	>10 ⁹ L/mol
LoB	User Guide
Specificity	Positive: / Negative: PTH, T3, T4
Epitope	ND
Applications	<input checked="" type="checkbox"/> ELISA <input checked="" type="checkbox"/> CLIA <input type="checkbox"/> GICA <input type="checkbox"/> FIA <input type="checkbox"/> IHC
Pair	<input checked="" type="checkbox"/> Capture <input type="checkbox"/> Detection
Recommendations	Pairable with #1024201
Stability	2 years
Concentration	2.0 mg/mL (+/-10%) or marked on the vial
Lot #	_____
References	

User Guide

Catalog # 1024
 Lot # _____

CLIA

Antigen Identification

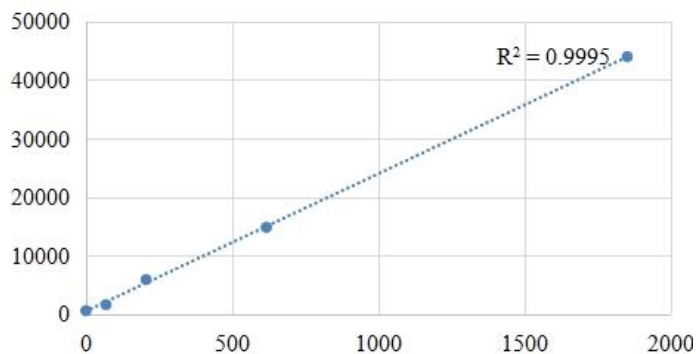
The antigen adopted in the following assays is a widely recognized clinical applied product obtained commercially.

Procedure

1. Mix 20 μ L serially diluted antigen or serum samples with 20 μ L (diluted to working conc. 50T/mL) capture reagent of 1024101(B) and 20 μ L 0.6mg/mL streptavidin-conjugated magnetic beads. Incubate with stir at 37 $^{\circ}$ C for 30 minutes.
2. Add 50 μ L (diluted to working conc. 20T/mL) detection reagent of 1024201(AP). Incubate with stir at 37 $^{\circ}$ C for 30 minutes.
3. Measure the relative light unit (RLU) of each reaction with a clinical approved chemiluminescence analyzer.

Measuring Range

The linear measuring range (at least) is 22.9-1851pg/mL ($R^2 > 0.99$).



Limit of Blank* *Follow the Guideline EP17 published by Clinical and Laboratory Standards Institute (CLSI)

Sample tested: blank samples. Tests: 20.

The LoB is <20pg/mL.

Limit of Detection* *Follow the Guideline EP17 published by Clinical and Laboratory Standards Institute (CLSI)

Sample tested: low concentration samples. Tests: 20.

The LoD is <25pg/mL.

Specificity

The assay shows no cross-reactivities when detecting antigens as follows: PTH at a tested conc. of 100ng/mL, T3 at a tested conc. of 0.8ng/mL, T4 at a tested conc. of 25ng/mL, human serum albumin at a tested conc. of 100mg/mL.

HKIG™ All Rights Reserved