

Product Information

Name	tau (phosphorylation) antigen isomer set		
Catalog #	2035I		
Species	Human		
Product Description	Recombinant protein produced by <i>in vitro</i> mammalian cell culture free from animal-derived components		
NCBI Ref. Seq. No.	Tau-B (1N3R)	P10636-4	381aa.
	Tau-C (2N3R)	P10636-5	410aa.
	Tau-D (0N4R)	P10636-6	383aa.
	Tau-E (1N4R)	P10636-7	412aa.
	Fetal-Tau (0N3R)	P10636-2	352aa.
Expression Fragment	Full length		
AA. Residues No.	isomer-specific		
Predicted MW	isomer-specific		
Actual MW	isomer-specific		
Modification	None		
Tag	A his and a pro-stability tag		
Solution	Referred to CoA		
Appearance	Clear, transparent liquid, colorless or slightly yellow		
Storage	2-8°C for 3 days, -20°C for long-term storage, avoid multiple freeze-thaw cycles		
Purity	>75%		
Concentration	Referred to CoA		
Lot #	_____		
References			

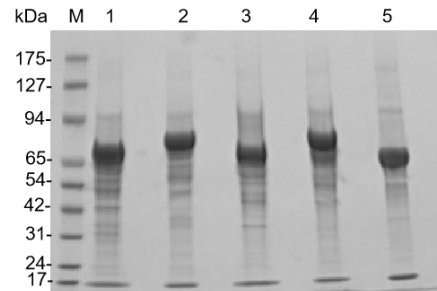
User Guide

Catalog # 2035I

Lot # _____

Purity

>75%, The purity of the product is determined by SDS-PAGE visualized with coomassie blue.



Lane-1: phosphorylation Tau-B (with a his and a pro-stability tag,~17kd)

Lane-2: phosphorylation Tau-C (with a his and a pro-stability tag,~17kd)

Lane-3: phosphorylation Tau-D (with a his and a pro-stability tag,~17kd)

Lane-4: phosphorylation Tau-E (with a his and a pro-stability tag,~17kd)

Lane-5: phosphorylation Fetal-tau (with a his and a pro-stability tag,~17kd)

HKIG™ All Rights Reserved