

## Product Information

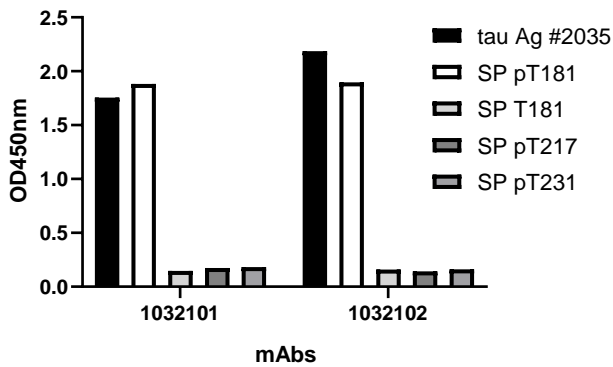
<b>Name</b>	Anti tau (pT181) monoclonal antibody
<b>Target</b>	tau with phosphorylation at 181 threonine
<b>Target Species</b>	Human
<b>Target Description</b>	Phosphorylation-modified aggregated tau is a novel diagnostic biomarker of Alzheimer's disease (AD).
<b>Host</b>	Mouse
<b>Product Description</b>	Monoclonal antibody produced by <i>in vitro</i> cell culture under conditions free from animal-derived components
<b>Conjugation</b>	Unconjugated/Biotin
<b>Catalog #</b>	1032102/1032102(B)
<b>Solution</b>	Saline solution, pH 6.5-7.5 with preservative
<b>Appearance</b>	Clear, transparent liquid, colorless or slightly yellow
<b>Storage</b>	2-8°C
<b>Purity</b>	>95%
<b>Subclass</b>	IgG1, kappa
<b>Affinity (K<sub>aff</sub>)</b>	>10 <sup>9</sup> L/mol
<b>LoB</b>	User Guide
<b>Specificity</b>	Positive: / Negative: tau (unphosphorylated), tau (pT217), tau (pT231)
<b>Epitope</b>	phosphorylation site at 181 threonine of tau
<b>Applications</b>	<input checked="" type="checkbox"/> ELISA <input checked="" type="checkbox"/> CLIA <input type="checkbox"/> GICA <input type="checkbox"/> FIA <input type="checkbox"/> IHC
<b>Pair Recommendations</b>	<input checked="" type="checkbox"/> Capture <input type="checkbox"/> Detection Pairable with #1035201
<b>Stability</b>	2 years
<b>Concentration</b>	2.0 mg/mL (+/-10%) or marked on the vial
<b>Lot #</b>	_____
<b>References</b>	

## User Guide

**Catalog #** 1032  
**Lot #** \_\_\_\_\_

### Specificity

An indirect ELISA is adopted to determine the recognition of the monoclonal antibody #1032101 and #1032102 to the phosphorylated 181 threonine of tau. Coating antigens are as follow: 1. tau (phosphorylation) antigen (#2035), 2: Synthetic peptide covering the phosphorylated 181 threonine of tau, 3: Synthetic peptide covering the non-phosphorylated 181 threonine of tau, 4: Synthetic peptide covering the phosphorylated 217 threonine of tau, 5: Synthetic peptide covering the phosphorylated 231 threonine of tau.



HKIG™ All Rights Reserved