

## Product Information

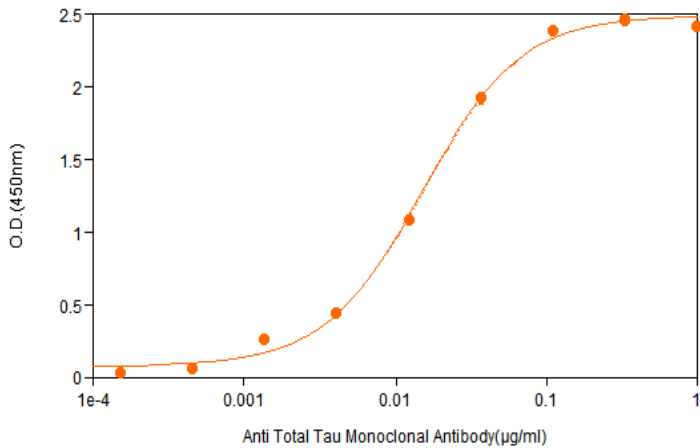
<b>Name</b>	Anti total tau monoclonal antibody
<b>Target</b>	microtubule-associated protein tau
<b>Target Species</b>	Human
<b>Target Description</b>	Tau is a microtubule-associated protein that plays an important role in the pathogenesis of Alzheimer's disease (AD) and several types of dementia.
<b>Host</b>	Mouse
<b>Product Description</b>	Monoclonal antibody produced by <i>in vitro</i> cell culture under conditions free from animal-derived components
<b>Conjugation</b>	Unconjugated/Biotin
<b>Catalog #</b>	1035201/1035201(B)
<b>Solution</b>	Saline solution, pH 6.5-7.5 with preservative
<b>Appearance</b>	Clear, transparent liquid, colorless or slightly yellow
<b>Storage</b>	2-8°C
<b>Purity</b>	>95%
<b>Subclass</b>	IgG1, kappa
<b>Affinity (K<sub>aff</sub>)</b>	>10 <sup>9</sup> L/mol
<b>LoB</b>	User Guide
<b>Specificity</b>	Reactive to Tau-B (UniProt ID: P10636-4), Tau-C (UniProt ID: P10636-5), Tau-D (UniProt ID: P10636-6), Tau-E (UniProt ID: P10636-7), Tau-F (UniProt ID: P10636-8), Fetal tau (UniProt ID: P10636-2)
<b>Epitope</b>	ND
<b>Applications</b>	<input checked="" type="checkbox"/> ELISA <input checked="" type="checkbox"/> CLIA <input type="checkbox"/> GICA <input type="checkbox"/> FIA <input type="checkbox"/> IHC
<b>Pair Recommendations</b>	<input checked="" type="checkbox"/> Capture <input checked="" type="checkbox"/> Detection Pairable with #1032101, 1032102, 1033101, 1034101
<b>Stability</b>	2 years
<b>Concentration</b>	2.0 mg/mL (+/-10%) or marked on the vial
<b>Lot #</b>	_____
<b>References</b>	

## User Guide

Catalog # 1035  
 Lot # \_\_\_\_\_

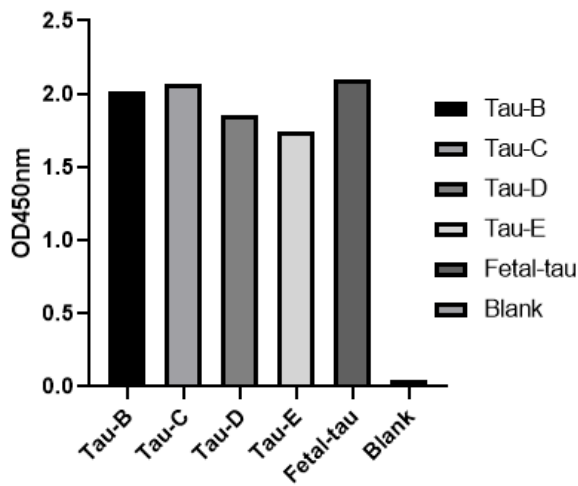
### Avidity

An indirect ELISA is adopted to determine the recognition of the monoclonal antibody #1035201 to tau. The monoclonal antibody (#1035201) can bind immobilized human tau antigen (#2035N, Tau-F) with a linear range of 0.2-111.1ng/mL (QC tested).



### Specificity

An indirect ELISA is adopted to determine the recognition of the monoclonal antibody #1035201 to other tau isoforms. Significant cross-reactivity is detected with different tau isoforms, including Tau-B, Tau-C, Tau-D, Tau-E and Fetal tau.



HKIG™ All Rights Reserved